

An Ed Tech CoP Case Study: Stumbling Forward Together

Dung Mao, PhD Paul Ratté, ND
Northwestern Health Sciences University

August 1, 2019



NWHSU at a Glance

At NWHSU, we focus on giving our students the best natural wellness education, and the best professional opportunities.

8,610

Graduates and Counting

963 Student Enrollment

9:1 Average Student-Faculty Ratio

78% Of Faculty Hold the Highest Degree In Their Field

The Setting

Northwestern Health Sciences University | nwhealth.edu

The Characters



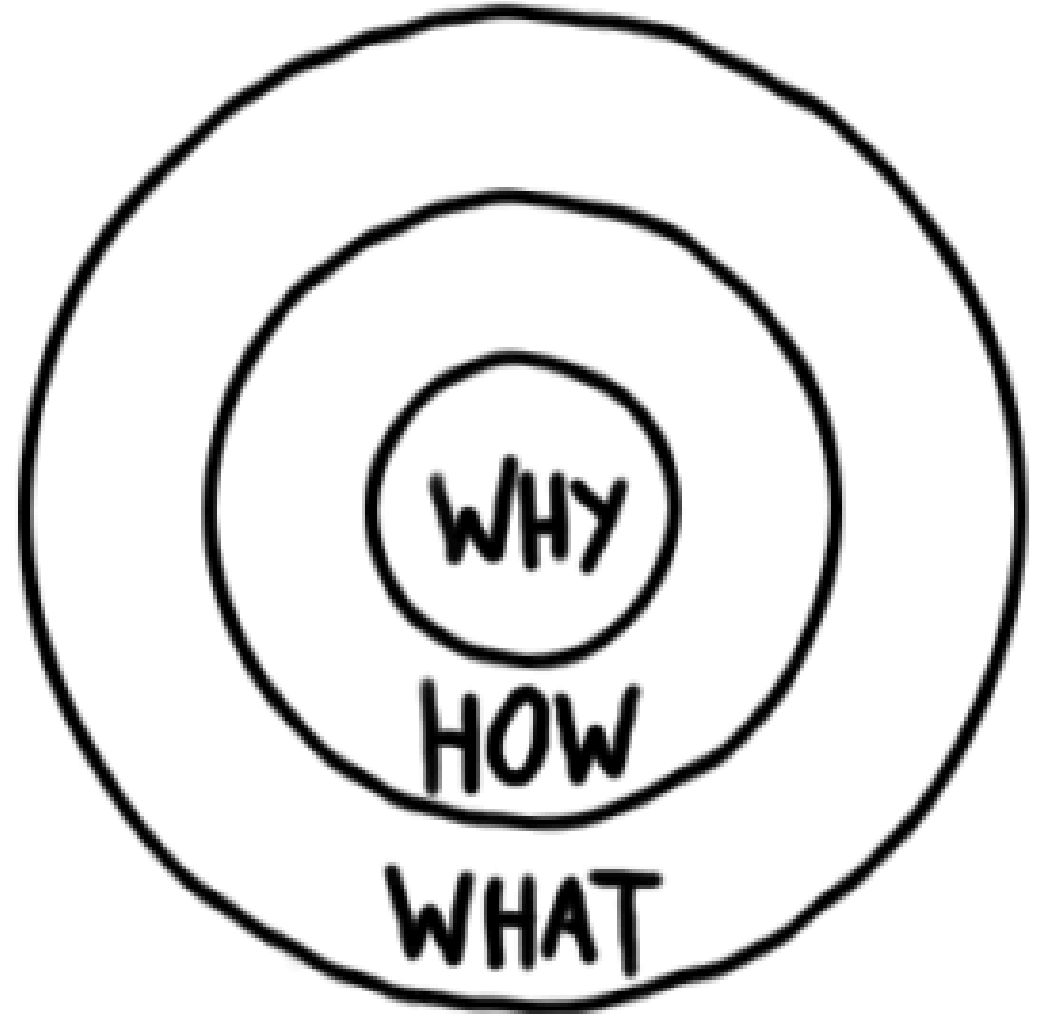
Paul Introduction
Dung Introduction
Our Other Team Members

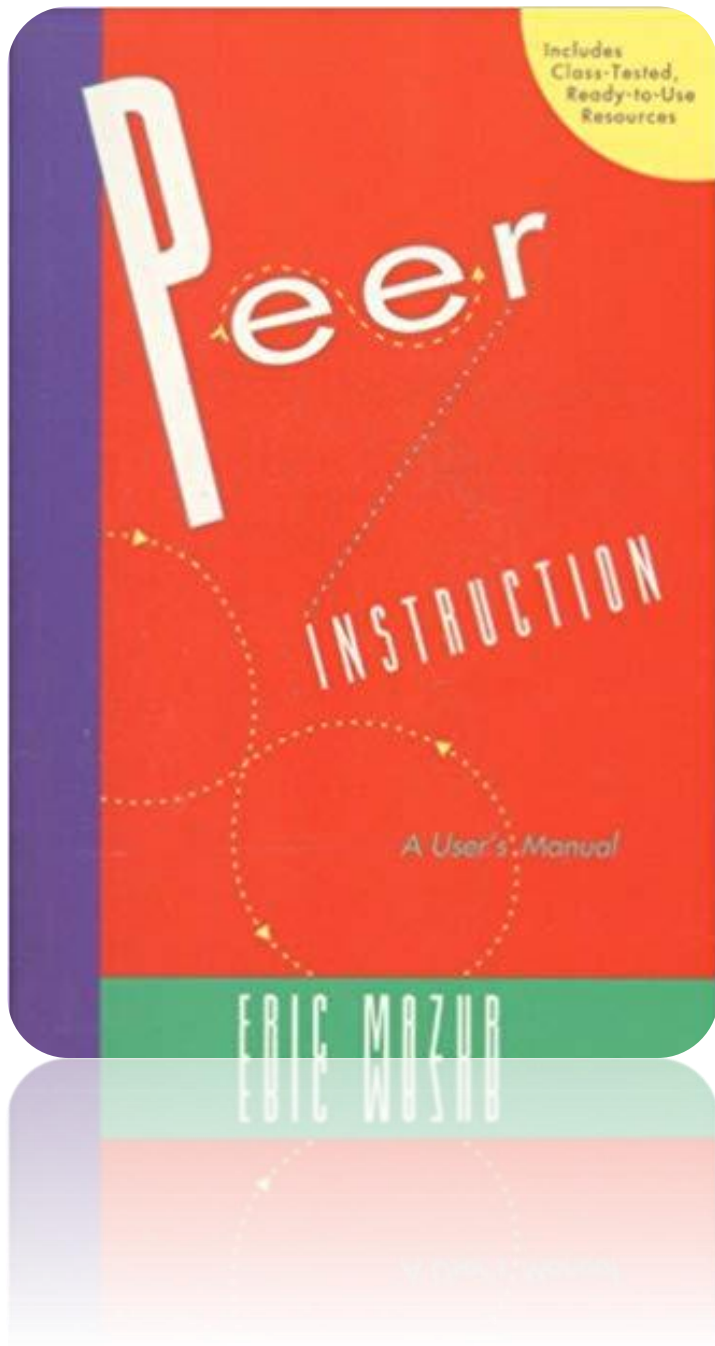
The Plot



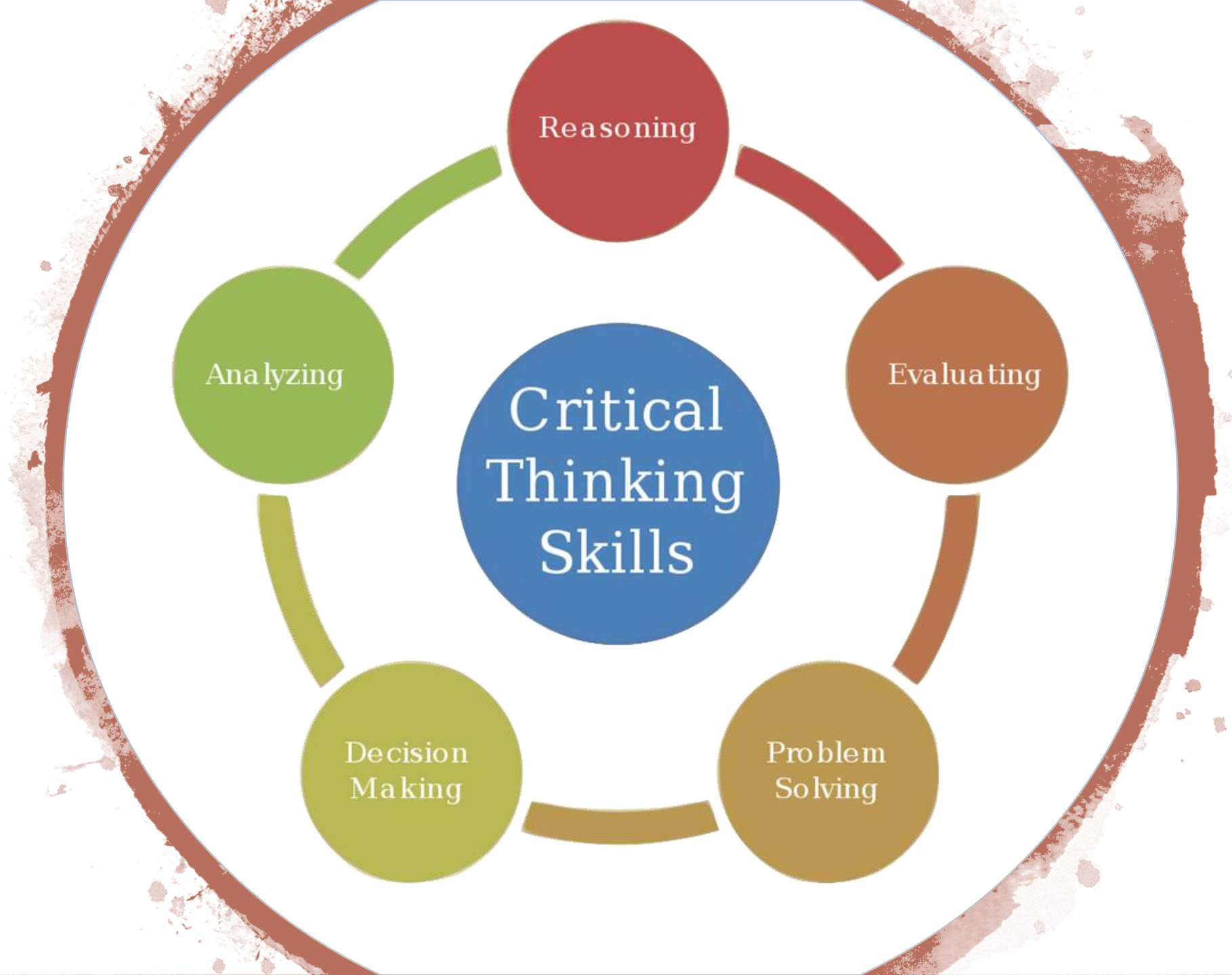
Once Upon A Time...

Why Introduce Technology?



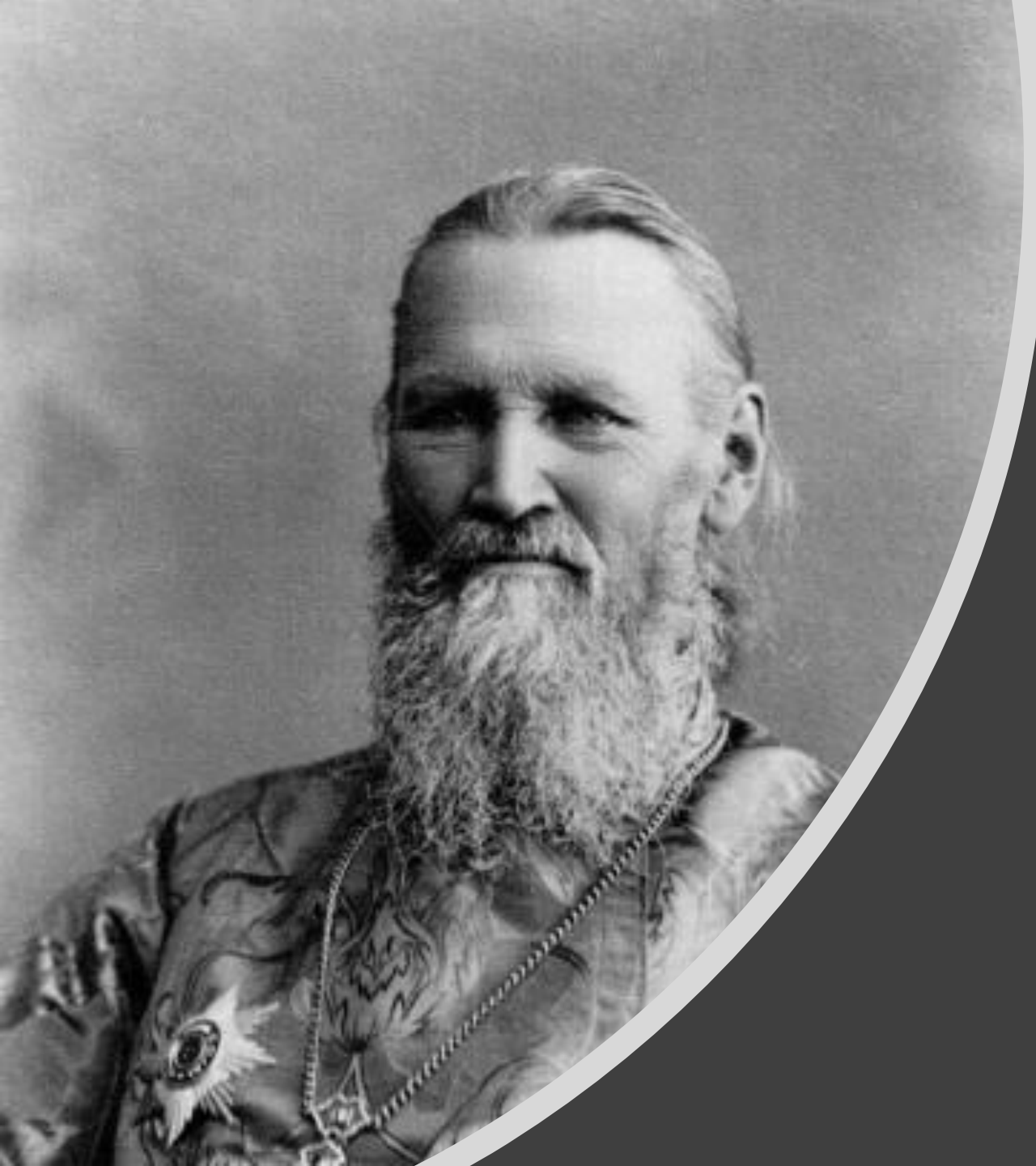


Interactive Engagement





New &
Shiny

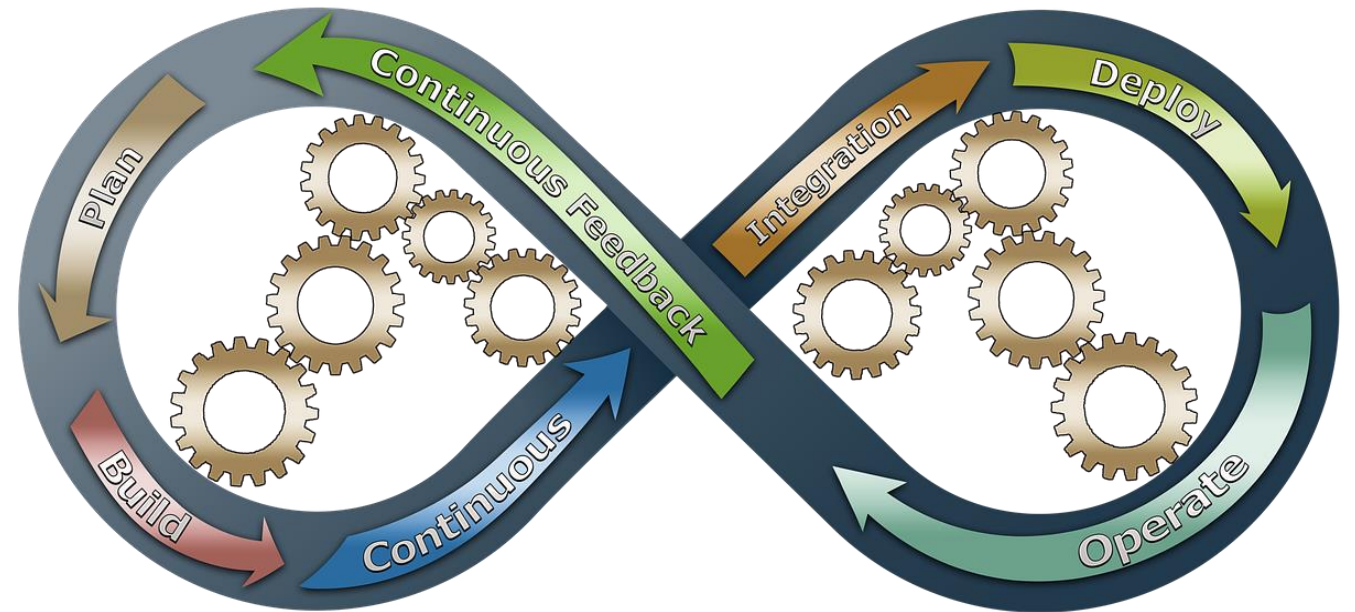


Teacher, Teach Yourself



The Transformation

- Fluid & Agile
- Guided by research on learning
 - 7 Principles of Learning
- Driven by current challenges
 - “just in time” help
- Themes vs Topics





Lessons Learned 1:
I am not alone



Lessons Learned 2: Modeling Peer Instruction



Lessons Learned 3:

If the three most difficult words to say in the English Language are, "I was wrong," then perhaps the next in line is, "I don't know."

A photograph of a field of tall green grass at sunset. The sun is low on the horizon, creating a warm, golden glow. The grass is in sharp focus in the foreground, while the background is slightly blurred. A semi-transparent white circle is overlaid on the right side of the image, containing the text.

**Lessons Learned 4:
Organic
Development**



Lessons Learned 5: Collaboration Opportunities *(building bridges)*

A central clock face with a globe of Earth as the dial is the focal point. The clock has Roman numerals from I to XII. The background is a dark, intricate pattern of interlocking gears and mechanical parts, creating a complex, industrial aesthetic. The text "Lesson 6: Consistency is Key" is centered over the globe in a clean, white, sans-serif font.

Lesson 6: Consistency is Key

Lesson 5:
Quality Not
Quantity





Lesson 8:
Faculty Driven



Dung Mao, PhD
dmao@nwhealth.edu

Paul Ratté, ND
pratte@nwhealth.edu