

Implementation of Outpatient Pharmacist-led Hypertension Management for Under-Resourced Patients: A Pilot Study

Figure 1: TCC Hypertension Management Algorithm

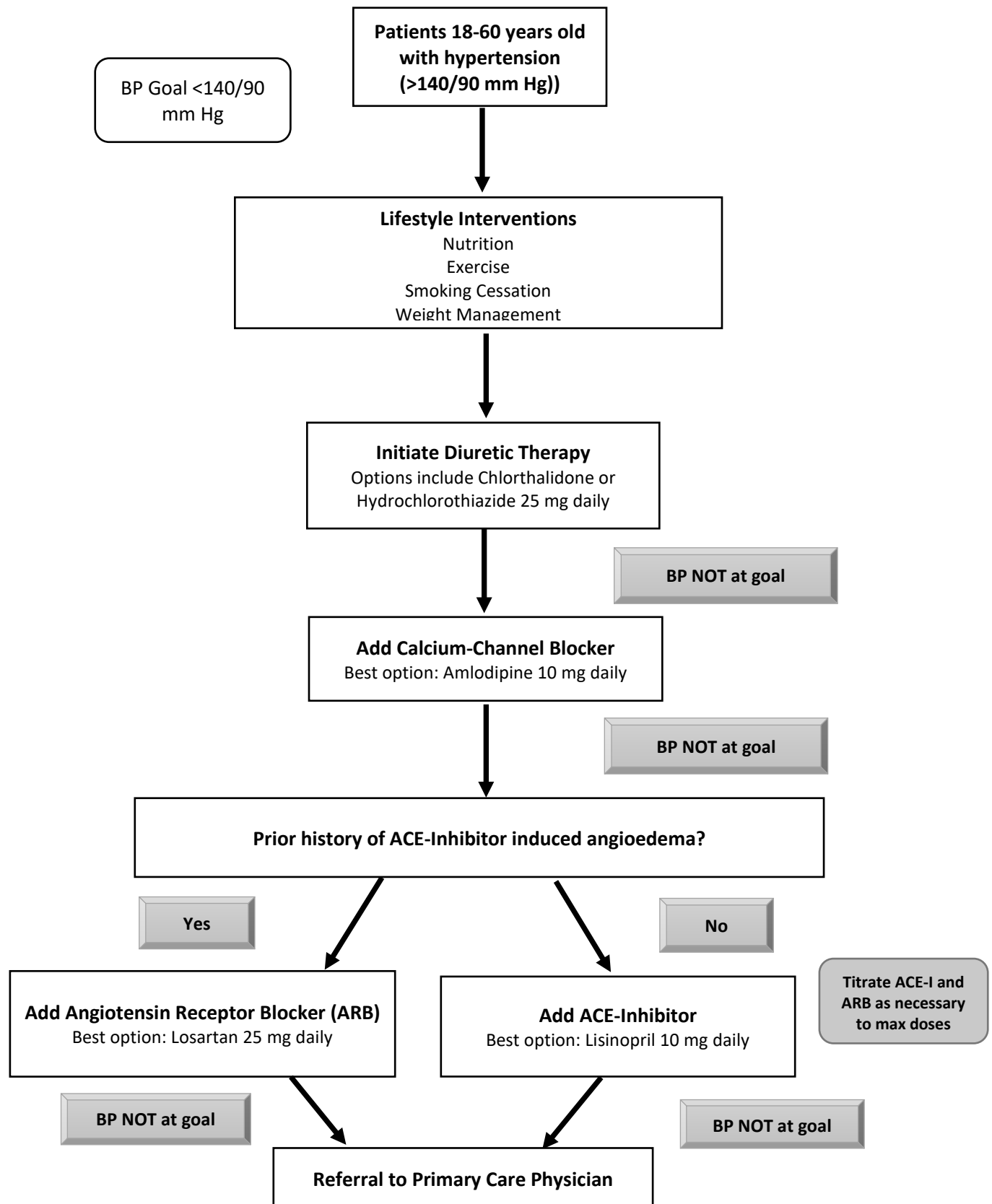


Figure 2. Patient Recruitment and Follow Up

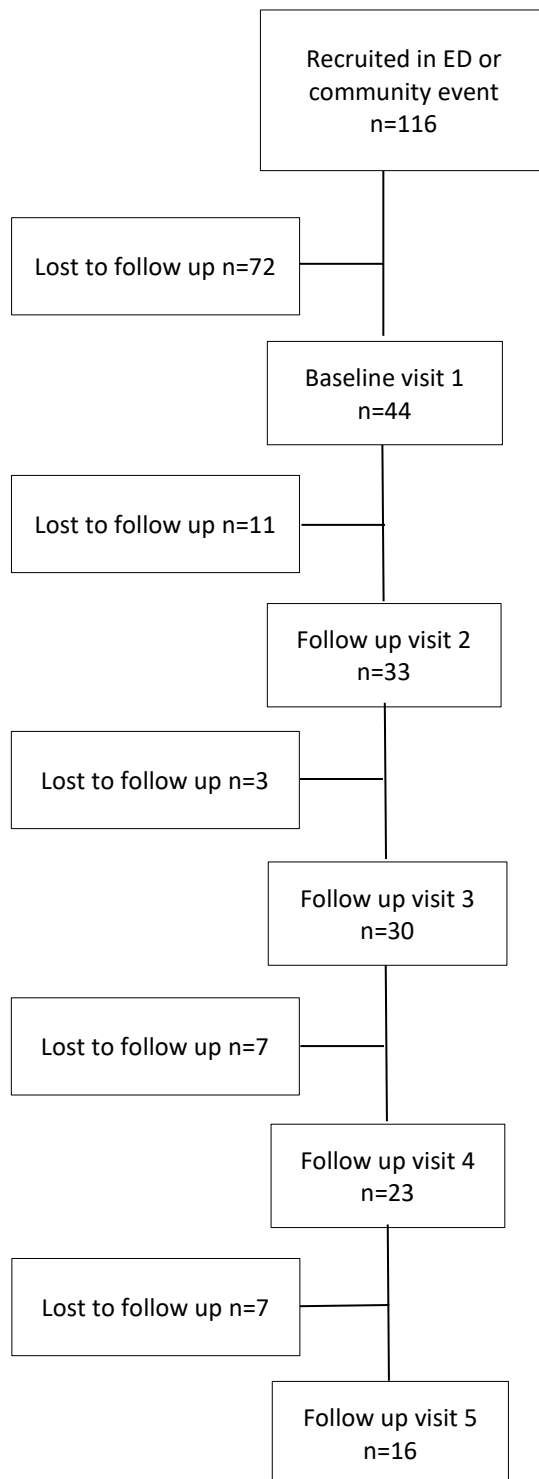
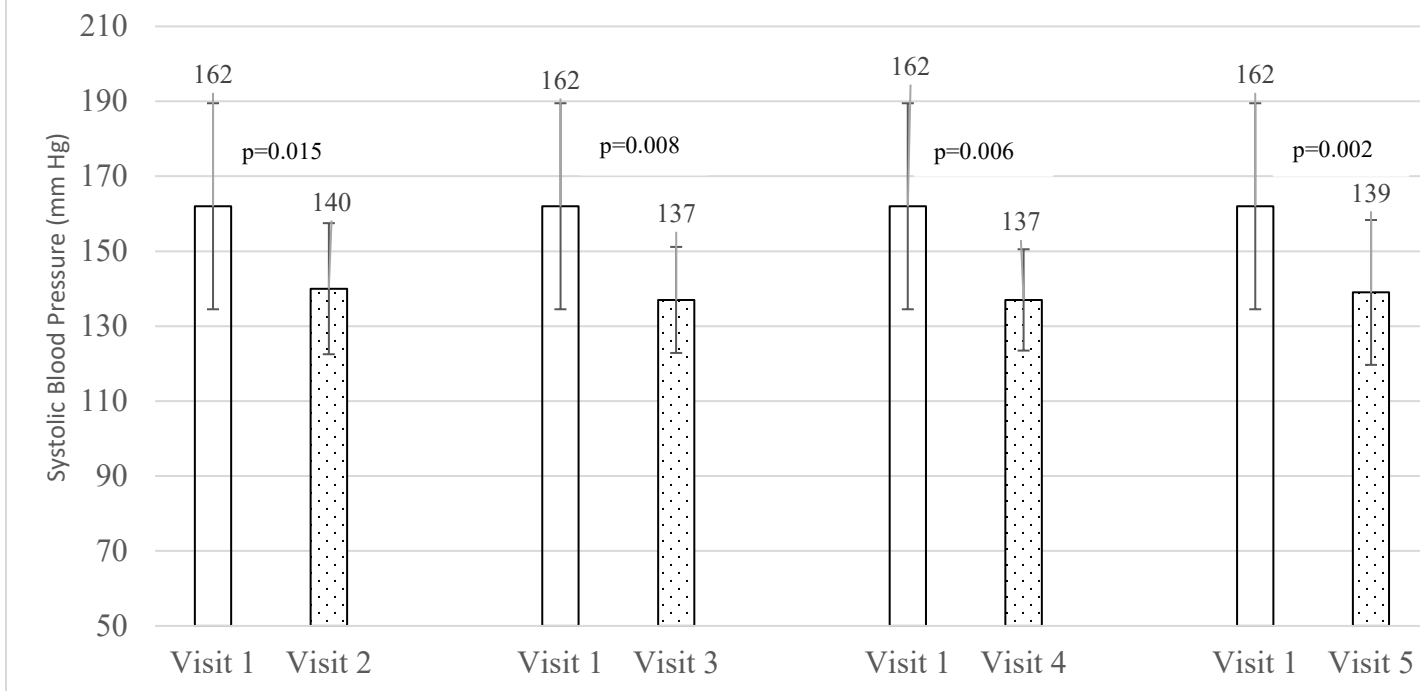


Fig. 3. Mean SBP at Each Visit Compared with SBP at Visit 1 (Cohort 3)



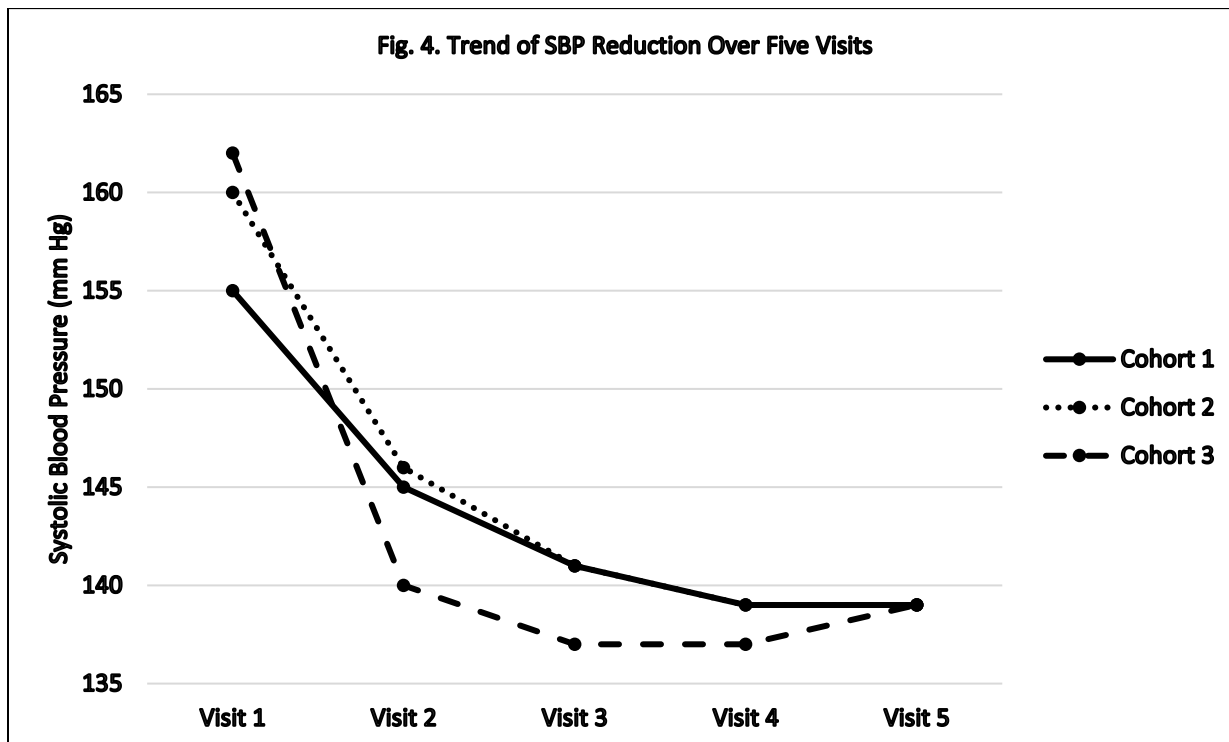
Note: Cohort 1= all participants who came for at least 1 pharmacy follow up visit.

Cohort 2= all participants who completed at least 3 pharmacy follow up visits.

Cohort 3= participants who completed all 5 pharmacy follow up visits.

Two Related Samples Wilcoxon Signed Ranks Test was used.

Fig. 4. Trend of SBP Reduction Over Five Visits



Note: Data for Cohort 1 following visit 1 and for Cohort 2 following visit three are imputed.

Table 1. Participant Demographics

Demographics	Baseline (N=44) Mean \pm SD or n (%)
Age	42.11 \pm 9.70
BMI	20.58 \pm 19.01
Gender	
Male	21 (47.7)
Female	23 (52.3)
Race	
Non-Hispanic White	1 (2.3)
African American	43 (97.7)
Tobacco use	
Never	9 (20.5)
Current smoker	28 (63.6)
Smoked in the past	7 (15.9)
Type of pharmacy providing prescriptions	
Hospital outpatient pharmacy	7 (15.9)
Independent pharmacy	5 (11.4)
Retail chain pharmacy	32 (72.7)
Number of chronic conditions in addition to HTN	
0	7 (15.9)
1	16 (36.4)
2	21 (47.7)
Number of medications	3.34 \pm 1.71
Currently on blood pressure medication	
No	23 (52.3)
Yes	21 (47.7)

Table 2. Average SBP and DBP Values Across Five Study Visits

Time Point	Original data				Imputed data					
	N	SBP, mean (SD)	p †	DBP, mean (SD)	p †	N	SBP, mean (SD)	p †	DBP, mean (SD)	p †
Cohort 1										
ED BP	41	172 (28.42)		104 (15.27)						
TCC Visit 1 ‡	44	155 (23.50)		100 (13.08)		44	155 (23.50)		100 (13.08)	
TCC Visit 2						44	146 (19.81)	0.029*	96 (12.46)	0.031*
TCC Visit 3						44	143 (17.48)	0.002**	94 (11.19)	0.013*
TCC Visit 4						44	142 (16.35)	0.001**	94 (12.05)	0.004**
TCC Visit 5						44	143 (18.09)	0.000***	93 (11.98)	0.001**
Cohort 2										
ED BP	28	172 (25.32)		105 (13.21)						
TCC Visit 1 ‡	30	160 (24.15)		102 (14.31)		30	160 (24.15)		102 (14.31)	
TCC Visit 2	30	146 (20.19)	0.020*	94 (13.04)	0.014*	30	146 (20.19)	0.020*	94 (13.04)	0.014*
TCC Visit 3	30	141 (16.60)	0.001**	92 (10.91)	0.006**	30	141 (16.60)	0.001**	92 (10.91)	0.006**
TCC Visit 4						30	141 (14.72)	0.000***	91 (11.95)	0.001**
TCC Visit 5						30	142 (17.55)	0.000***	91 (11.71)	0.000***
Cohort 3										
ED BP	15	176 (29.28)		105 (13.92)						
TCC Visit 1 ‡	16	162 (27.49)		103 (13.10)		16	162 (27.49)		103 (13.10)	
TCC Visit 2	16	140 (17.49)	0.015*	91 (11.35)	0.007**	16	140 (17.49)	0.015*	91 (11.35)	0.007**
TCC Visit 3	16	137 (14.15)	0.008**	91 (11.00)	0.018*	16	137 (14.15)	0.008**	91 (11.00)	0.018*
TCC Visit 4	16	137 (13.52)	0.006**	91 (10.81)	0.006**	16	137 (13.52)	0.006**	91 (10.81)	0.006**
TCC Visit 5	16	139 (19.33)	0.002**	90 (10.17)	0.002**	16	139 (19.33)	0.002**	90 (10.17)	0.002**

Note: Cohort 1= all participants who came for at least 1 TCC pharmacy follow up visit.

Cohort 2= all participants who completed at least 3 TCC pharmacy follow up visits.

Cohort 3= participants who completed all 5 TCC pharmacy follow up visits.

† Two Related Samples Wilcoxon Signed Ranks Test.

‡ SBP/DBP at TCC visit 1 is as the comparison

SD=Standard Deviation. * $p < 0.05$; ** $p < 0.01$; *** $p < 0.001$.